



Veterans’ Association
of the
Chicago & North Western Railway



Organized December 9, 1924

An Assortment of Photographs – Page 4

Louis Wilson sent in all of these photos on page 4, having taken most of them. Thanks, **Louis!** Other contributions are welcome and appreciated. Please send them to the [webmaster](#).



Signal Maintainer **Louis Wilson** doing some pole line work near Menomonie, WI on August 2, 2007. **Louis** is the Signal Maintainer at Merrilan, WI and has 31 years of service with the C&NW & UP. Photo taken by **Benny Bruhling**, Signal Maintainer at Altoona.



Around the middle of August, there were some bad storms between Adams and St. Paul with heavy damage to the pole lines caused by falling trees. Everyone put in long hours to get the signal system back in service. Hard at work on August 15, 2007 in the Adams area are (left) **Brian Millerschoen** and (right) **Carlton Dawson**. **Brian** is Manager of Signal Maintenance with well over 30 years of service. Being in management did not stop **Brian** from pitching right in to get the signal system up and running again. **Carlton** is the Warrens Signal Maintainer and a newer employee. Both photos by **Louis Wilson**



On August 10, 2007, **Louis** caught the C&NW 8701 rolling westbound past Merrilan Siding.

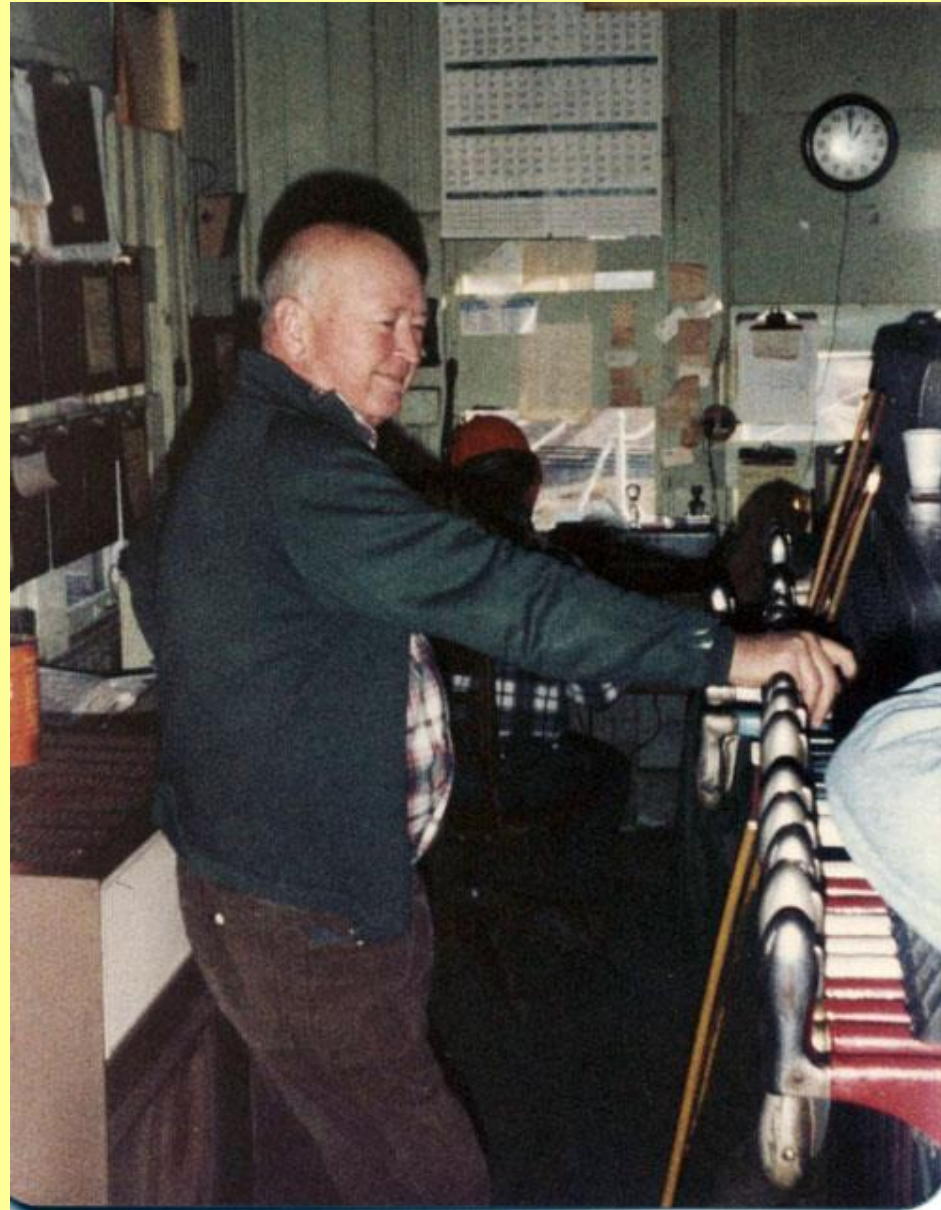
On August 6, 2007, **Louis** was working at the County Highway G crossing in Augusta, WI when Retired Agent-Telegrapher **Richard Johnson** showed up. **Richard** hired out on May 7, 1947 and retired on January 3, 1985 with over 37 years of service, working at various stations between Bayport (near Hudson) and Augusta. His longest time at one station was Augusta from 1956 to 1976. **Richard** is 83 years young. About 5 years later, **Richard** passed away on July 8, 2012.



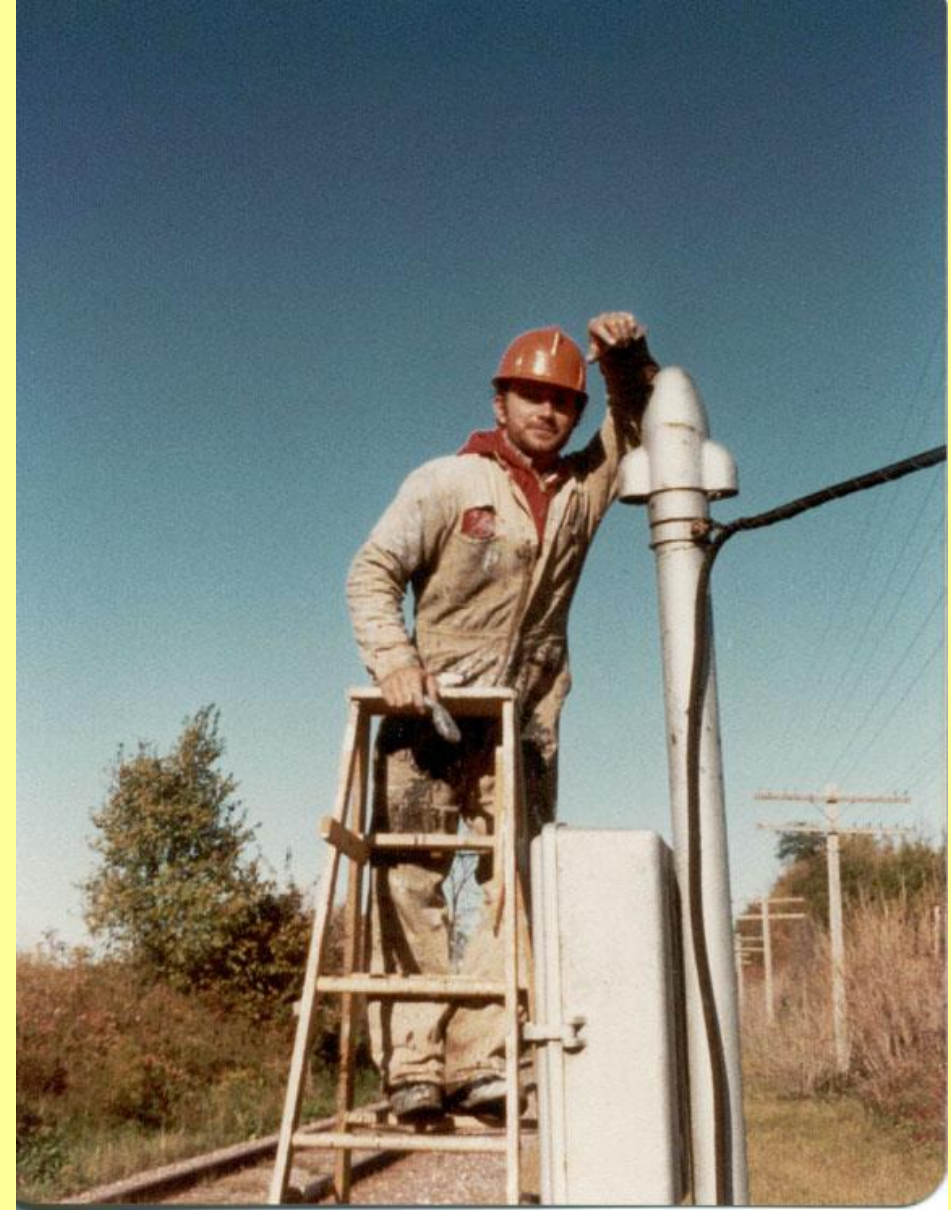
Clayton Arndt, retired Agent at Clyman Junction. **Clayton** stopped in at Merrilan, WI on 04/09/07 and **Louis Wilson** got this photo. **Clayton** now lives in Watertown, WI.



B & B Crew in their Camp Car at Baraboo, WI. Left to right: - **Pumpy Papernick**, **Frank Banicki** and **Everett Schadde**, taken in the Fall of 1981.



Here's **Clayton** on the job at Clyman Junction Tower in November 1981.



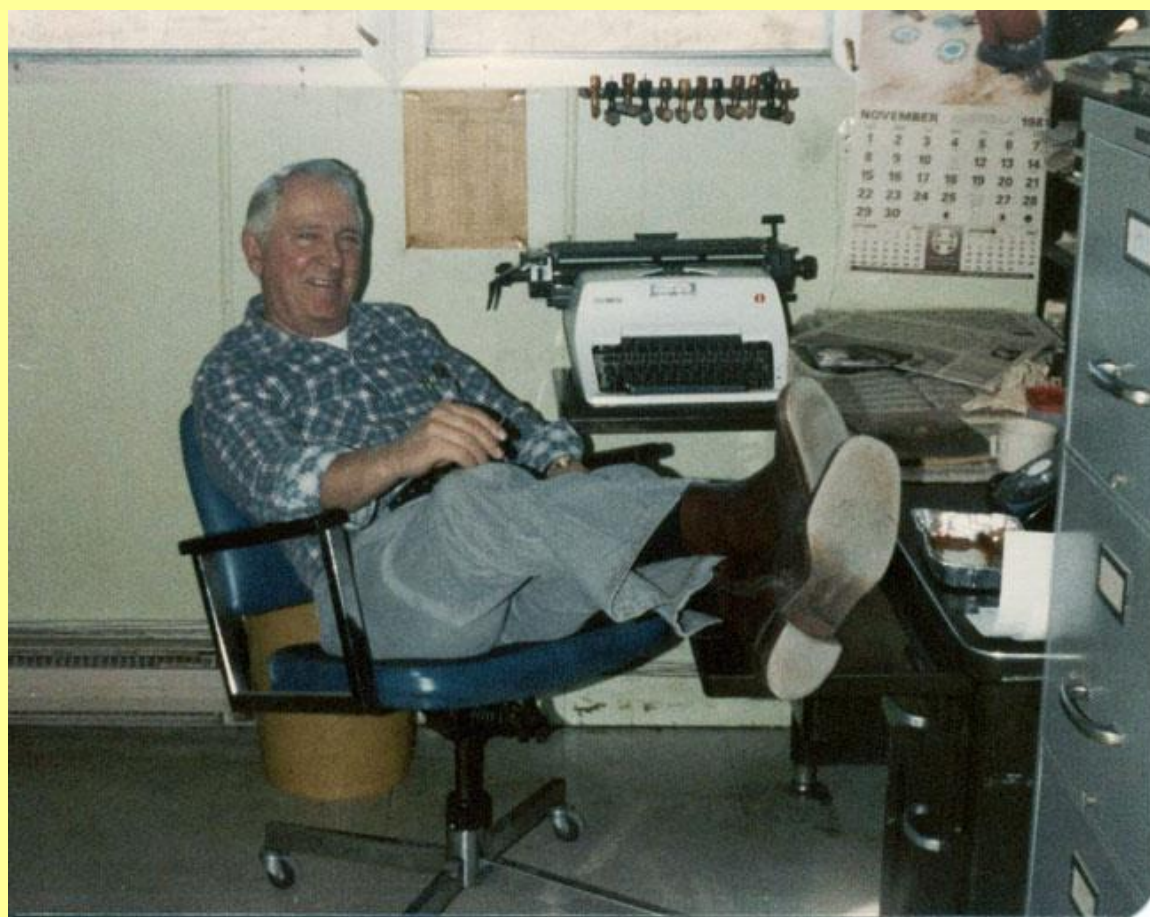
Assistant Signalman **Gary Gawrysiak** painting a relay box just west of Rock Springs, WI in the Fall of 1981.



Signalman **Al Farrow** at Evansville, WI in April 1982.



Assistant Signalman **Bruce Knobel** painting a switch box at Reedsburg, WI in the fall of 1981.

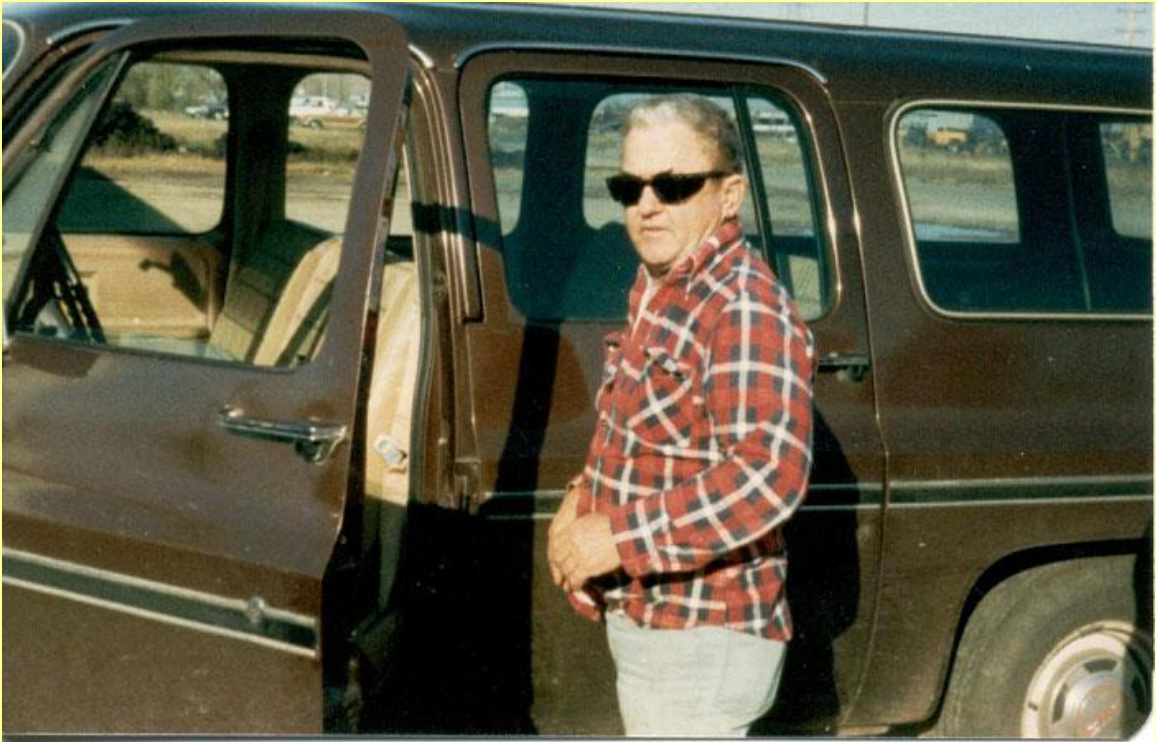


Glenn Martinsen, Clerk at Clyman Junction, in his office in November 1981.



District Signal Foreman Benjamin D. Waite at Mile Post 93 near Packwaukee, WI in March 1982.

Signalmen working at County Highway D near Oxford, WI in March 1982. Left to right: Dave Hooker, Al Farrow, Bruce Knoble & Gary Gawrysiak.



Lead Signal Maintainer Norman McMicken at Madison, WI on his last day of work before retiring in 1981.



Lead Signal Maintainer **Phil Singletary** on the stairway of Clyman Junction Tower in November 1981.



Trackman **Ralph Steuber** and Foreman **Earl Harnack**. Taken at Clyman Junction, WI in Nov. 1981.



Reedsburg Signal Maintainer **Ray Deakin** taken just east of Elroy, WI in the Fall of 1981.



Assistant. Signalman **Steve Gillingham** painting a crossing signal at Reedsburg, WI in the fall of 1981.